



# GMT MONTHLY MEMBERSHIP PROGRESS REPORT

Results as of: 3/31/2020

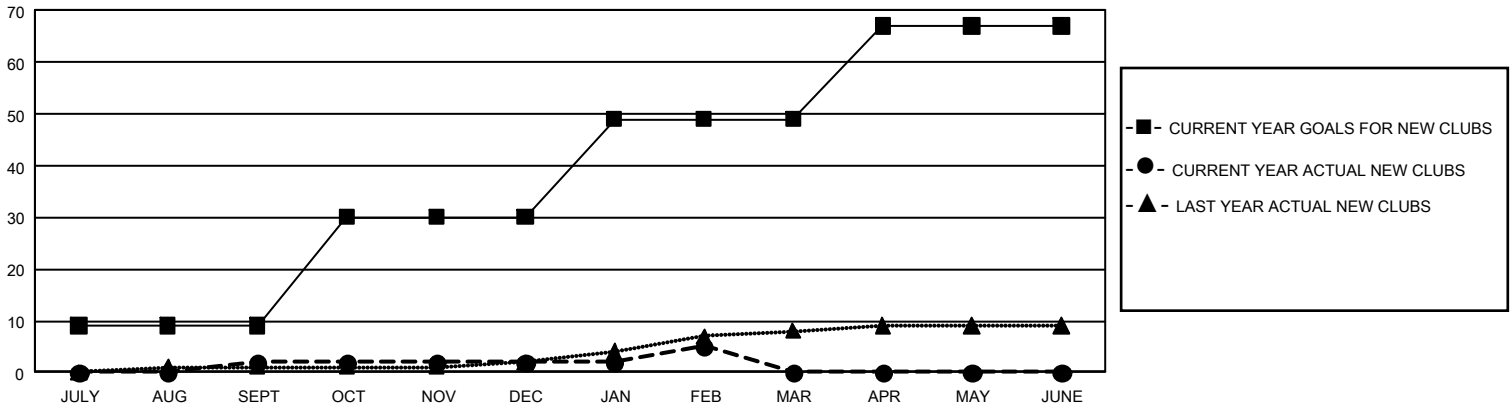
## GAT Constitutional Area 5 - Japan

REPORT DOES NOT INCLUDE CLUBS IN UNDISTRICTED AREAS.

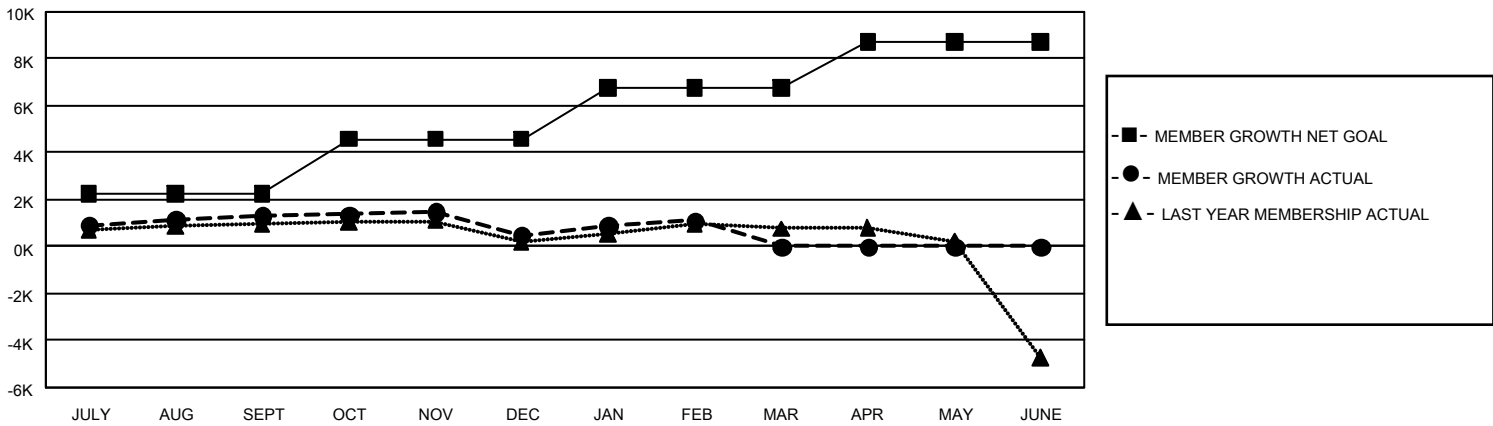
Clubs			
RESULTS FOR 2019-2020			
QUARTER	NEW CLUB GOAL	NEW CLUBS	DROPPED CLUBS
JULY/AUG/SEPT	27	2	6
OCT/NOV/DEC	63	0	5
JAN/FEB/MAR	57	3	5
APR/MAY/JUNE	54	0	0

Members			
RESULTS FOR 2019-2020			
QUARTER	MEMBER GROWTH NET GOAL	MEMBER GROWTH ACTUAL	DROPPED MEMBERS ACTUAL (including transfers)
JULY/AUG/SEPT	6,690	3,323	1,808
OCT/NOV/DEC	7,059	1,569	2,332
JAN/FEB/MAR	6,516	1,559	885
APR/MAY/JUNE	5,844	0	0

**GOALS AND ACTUAL NEW CLUBS CUMULATIVE**



**GOALS AND ACTUAL MEMBERS CUMULATIVE**



DROPPED CLUBS: 0	0 CLUBS OF 0 ADDED 1 OR MORE NEW MEMBERS	<b>GENDER DISTRIBUTION</b> MALE            0 (100.00%) FEMALE         0 (100.00%)
<b>DROPPED MEMBERS</b> DECEASED            0 CLUB CANCELLED      0 OTHER                    0 <b>TOTAL</b> 0	<a href="#">CLICK HERE FOR CUMULATIVE MEMBERSHIP DATA</a>	TOTAL FAMILY UNIT MEMBERS            0 FAMILY MEMBERS PAYING HALF DUES            0